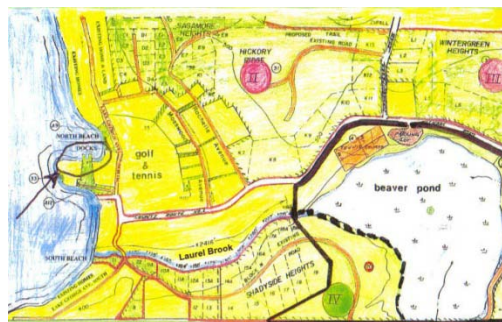
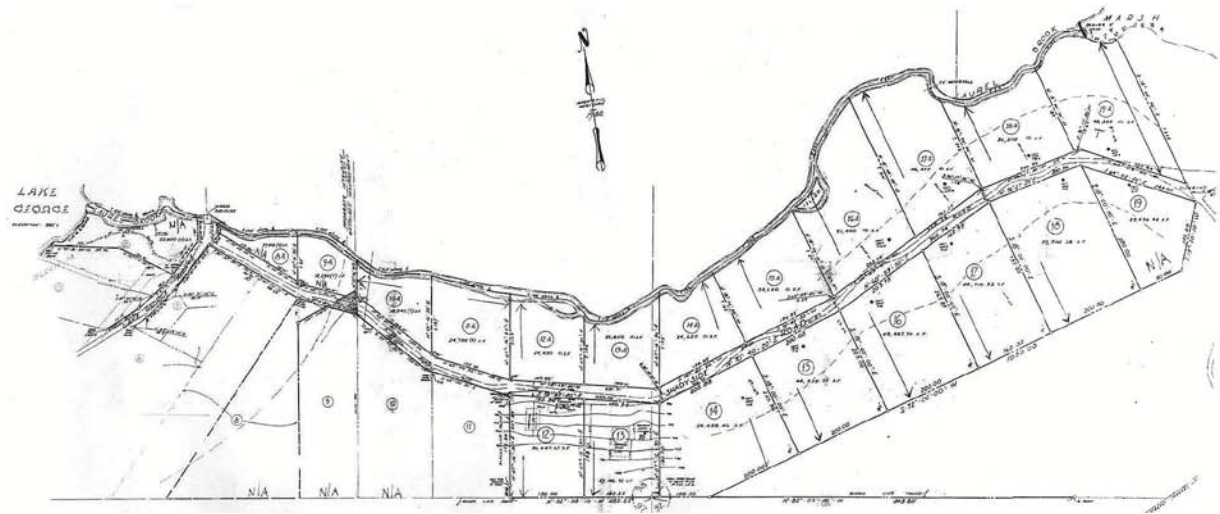


**Shadyside Heights**  
**1 to 2+ acre (double lots) Shady Heights**

**Prices Temporarily Reduced**  
**Priced from \$298,000.00 to \$448,000.00**





<u>Lot number</u>	<u>Size of Property</u>	<u>Price</u>
		Prices Temporarily Reduced
10A	1.04 acre	\$198,000
12+12A	1.26 acres	\$348,000
13+13A	1.19 acres	\$348,000
14+14A	1.81 acres	\$398,000
15+15A	1.84 acres	\$398,000
16+16A	2.30 acres	\$448,000
17+17A	2.10 acres	\$448,000
18+18A	2.16 acres	\$448,000
19A	1.11 acres	\$379,000

Glenburnie at Lake George Adirondack Mountains  
Putnam Station, New York 12861

Glenburnie is one of the most sought-after communities on Lake George and is located between the historical towns of Ticonderoga and Whitehall, New York. Offering deeded boat docking and beach rights on Lake George, these lots are being sold individually for the first time exclusively from the grantor. They are being offered with a deeded boat docking on Lake George. This docking offer is on a first to buy first to get basis. All lots border Laurel Brook, which flows into Lake George. Some of these properties also offer a view of Beaver Pond. Lake George is a nature lover's dream come true, considered a bird watcher's paradise. Located between towns of Ticonderoga and Whitehall, the town of Putnam is graced by the pristine Lake George to the west and the grand Lake Champlain to the east. The Town also offers its residents a sandy beach in the next bay which includes a small boardwalk, boat launch docks, etc., as well as the town ball field, tennis courts along with a great school system. Many ski resorts are easily accessible, such as Gore Mountain, Pico, and Killington in Vermont. You can take advantage of great outlet shopping in Lake George Village, Lake Placid, and Rutland, Vermont. This site is also close to the prestigious Middlebury College.

**TERMS AVAILABLE! DEVELOPERS & BROKERS WELCOME!**

*Prices and offers may change without notice at the Owner's discretion.*

[www.lakegeorgeatglenburnie.com](http://www.lakegeorgeatglenburnie.com)    [www.lakegeorgenyrealestate.net](http://www.lakegeorgenyrealestate.net)  
[www.glenburnielakegeorge.com](http://www.glenburnielakegeorge.com)    [www.lakegeorgerealestateglenburnieny.com](http://www.lakegeorgerealestateglenburnieny.com)

glenburnieTE1@aol.com    Fax: 201-573-0834  
Contact us by phone: 800-867-8816